

Kent West Corporate Park

22009 68th Ave S | Bldg A | Kent, WA

FOR LEASE



BRIAN BRUININKS, CCIM
(206) 336-5324
bbruininks@andoverco.com

SHANE MAHVI
(206) 336-5338
smahvi@andoverco.com

BUILDING HIGHLIGHTS

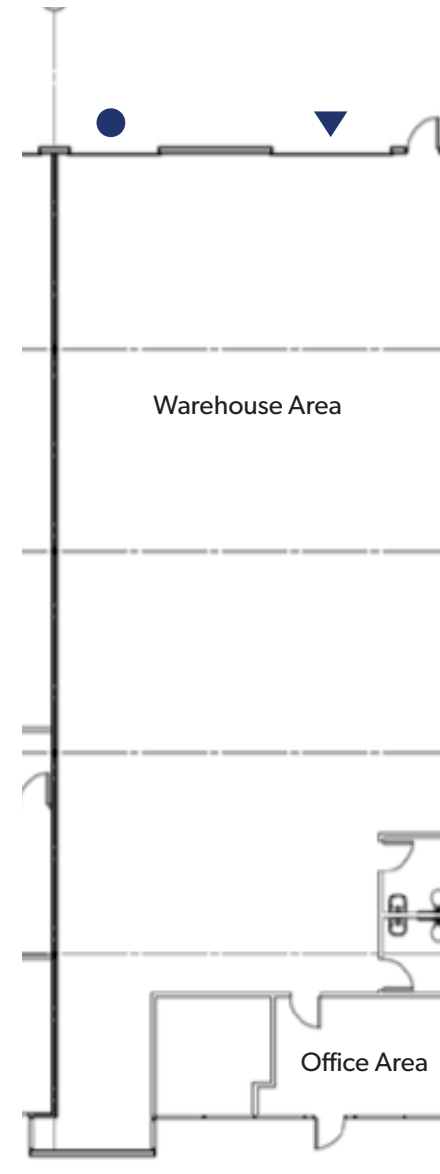
22009 68th Ave S | Kent, WA

- 4,000 SF Total
- Approx. 500 SF of Office
- 14' Clear Height
- 1 Dock Door
- 1 Grade Level Door
- Rare small dock and grade level space with West Valley Hwy frontage
- **Please call Brian/Shane for rates, terms, and availability**



The information contained herein has been obtained from reliable sources, but is not guaranteed. A prospective buyer/tenant should verify each item relating to this property and all information contained herein.

Please do not disturb the current tenant

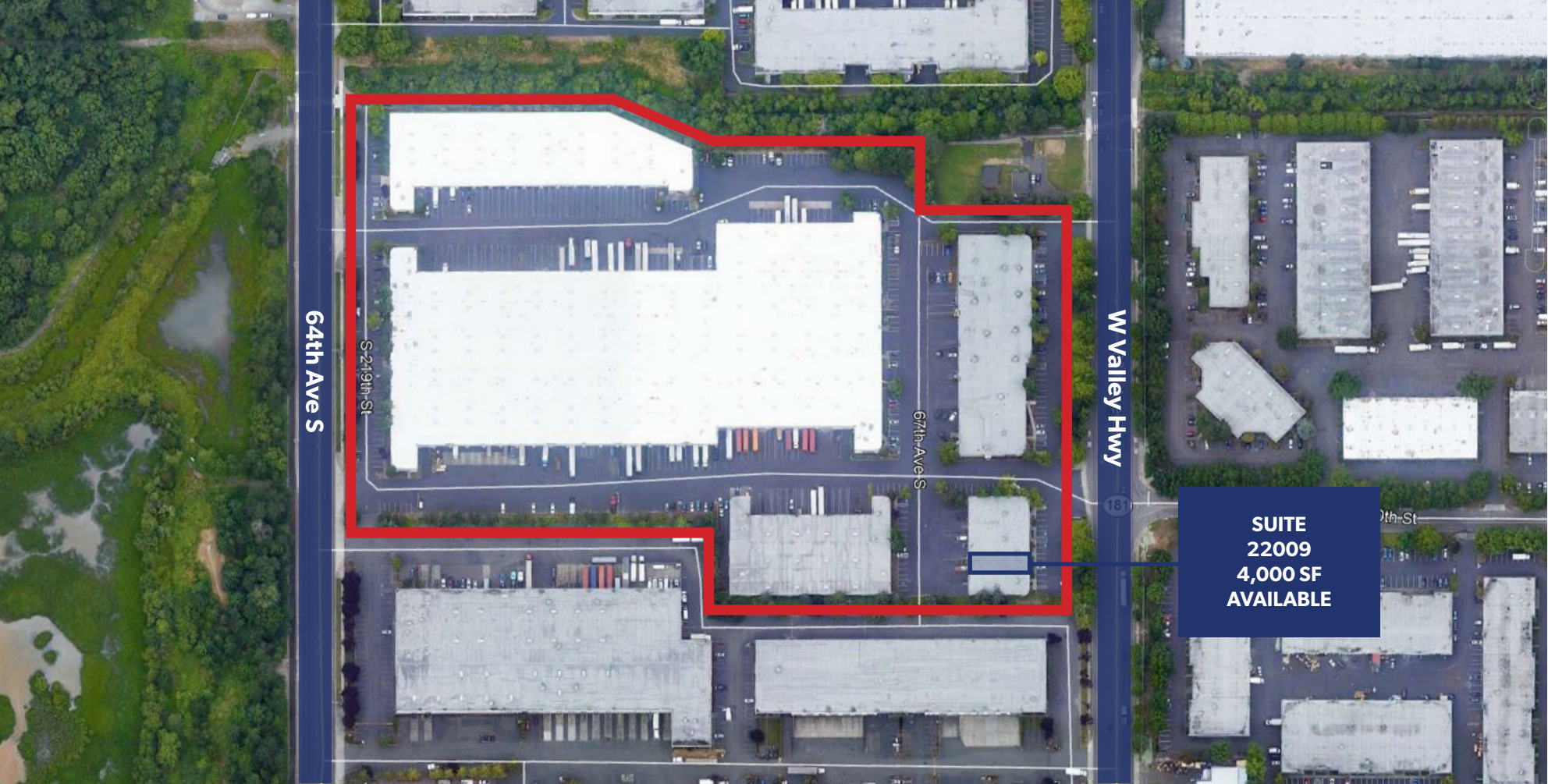


WEST VALLEY HWY FRONTAGE

- ▲ Dock high door
- Drive-in door



LOCATION MAP

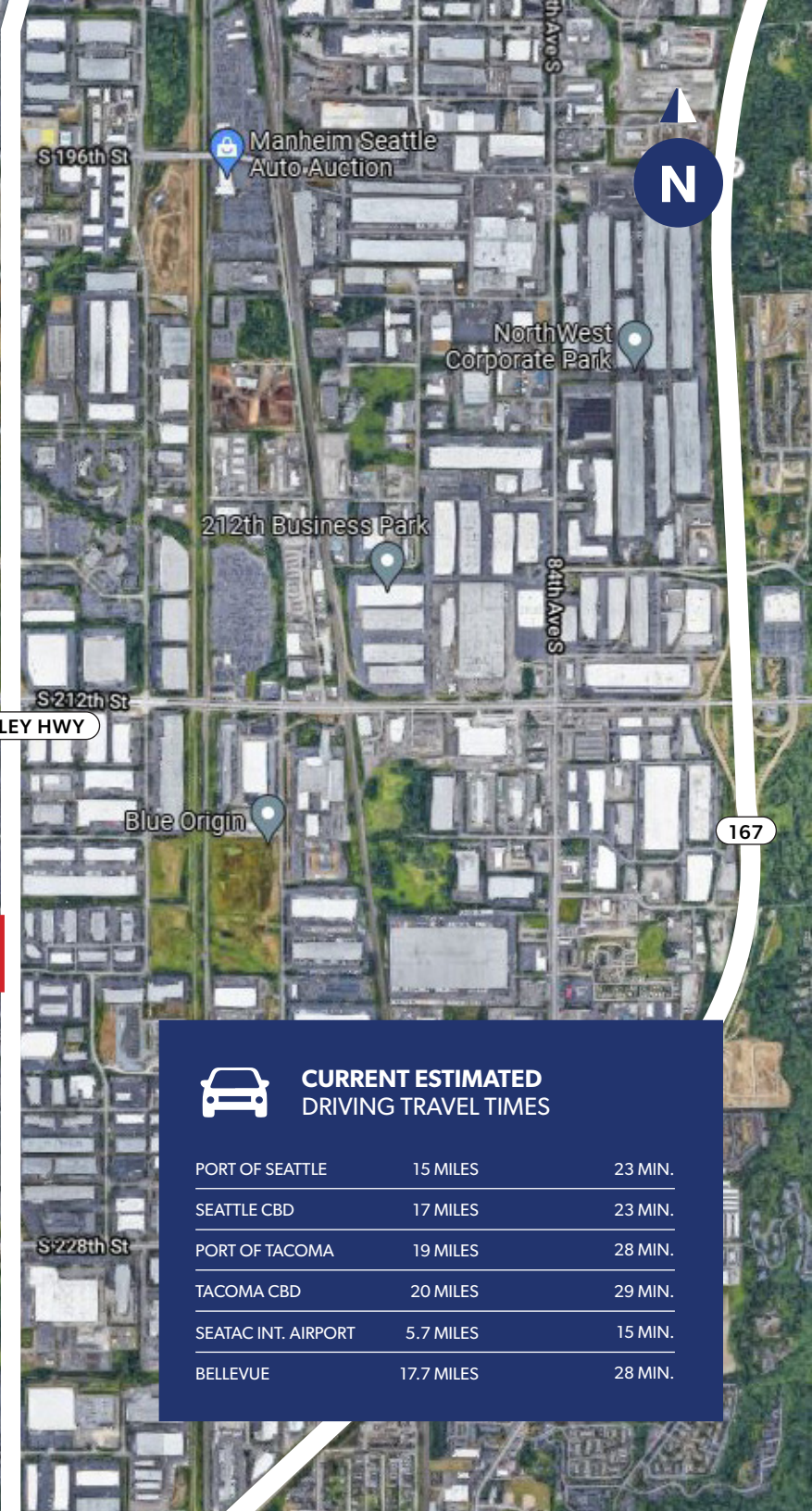


BRIAN BRUININKS, CCIM
(206) 336-5324
bbruininks@andoverco.com

SHANE MAHVI
(206) 336-5338
smahvi@andoverco.com



CONVENIENT COMMUTE



CURRENT ESTIMATED DRIVING TRAVEL TIMES		
PORT OF SEATTLE	15 MILES	23 MIN.
SEATTLE CBD	17 MILES	23 MIN.
PORT OF TACOMA	19 MILES	28 MIN.
TACOMA CBD	20 MILES	29 MIN.
SEATAC INT. AIRPORT	5.7 MILES	15 MIN.
BELLEVUE	17.7 MILES	28 MIN.