

# RUSSELL PLAZA

33600 6th Ave S | Federal Way, WA

First American Title  
Insurance Company

 THE ANDOVER  
COMPANY, INC.  
CORFAC INTERNATIONAL

**SHANE MAHVI**  
(206) 336-5338  
smahvi@andoverco.com

**BRIAN BRUININKS, CCIM**  
(206) 336-5324  
bbruininks@andoverco.com

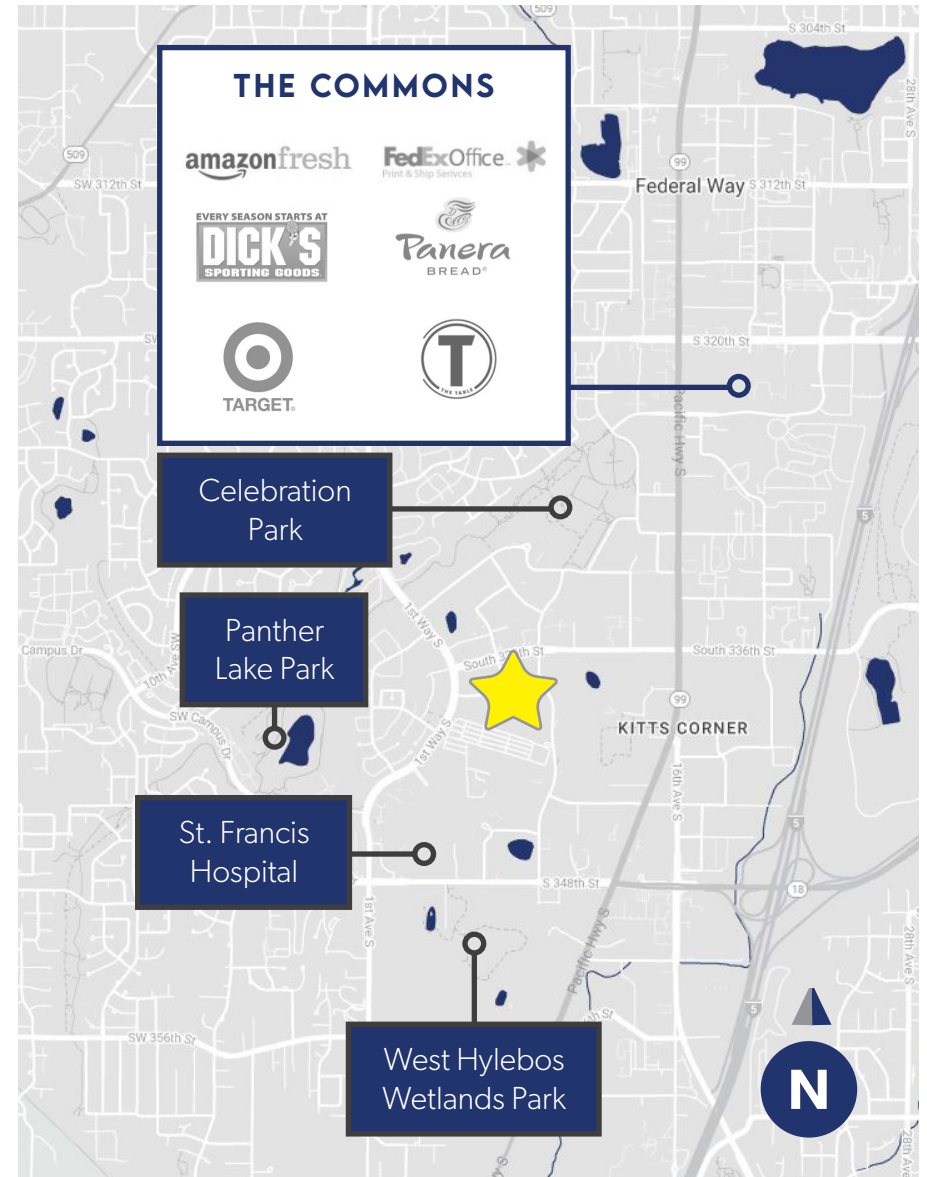
987 SF, 1,572 SF & 3,697 SF  
**FOR LEASE**

# RUSSELL PLAZA

33600 6th Ave South  
Federal Way, WA

## PROPERTY HIGHLIGHTS

- CLASS "A" SUBURBAN OFFICE SPACE
- AMPLE FREE SURFACE PARKING
- PROJECT AMENITIES INCLUDE CONFERENCE ROOM AND FITNESS CENTER
- LOCATED ON MAIN ARTERIAL; I-5 AND HWY 99
- CLOSE PROXIMITY TO THE COMMONS SHOPPING MALL & ST. FRANCIS HOSPITAL



*The information contained herein has been obtained from reliable sources, but is not guaranteed. A prospective buyer/tenant should verify each item relating to this property and all information contained herein.*

**SHANE MAHVI**  
(206) 336-5338  
smahvi@andoverco.com

**BRIAN BRUININKS, CCIM**  
(206) 336-5324  
bbruininks@andoverco.com

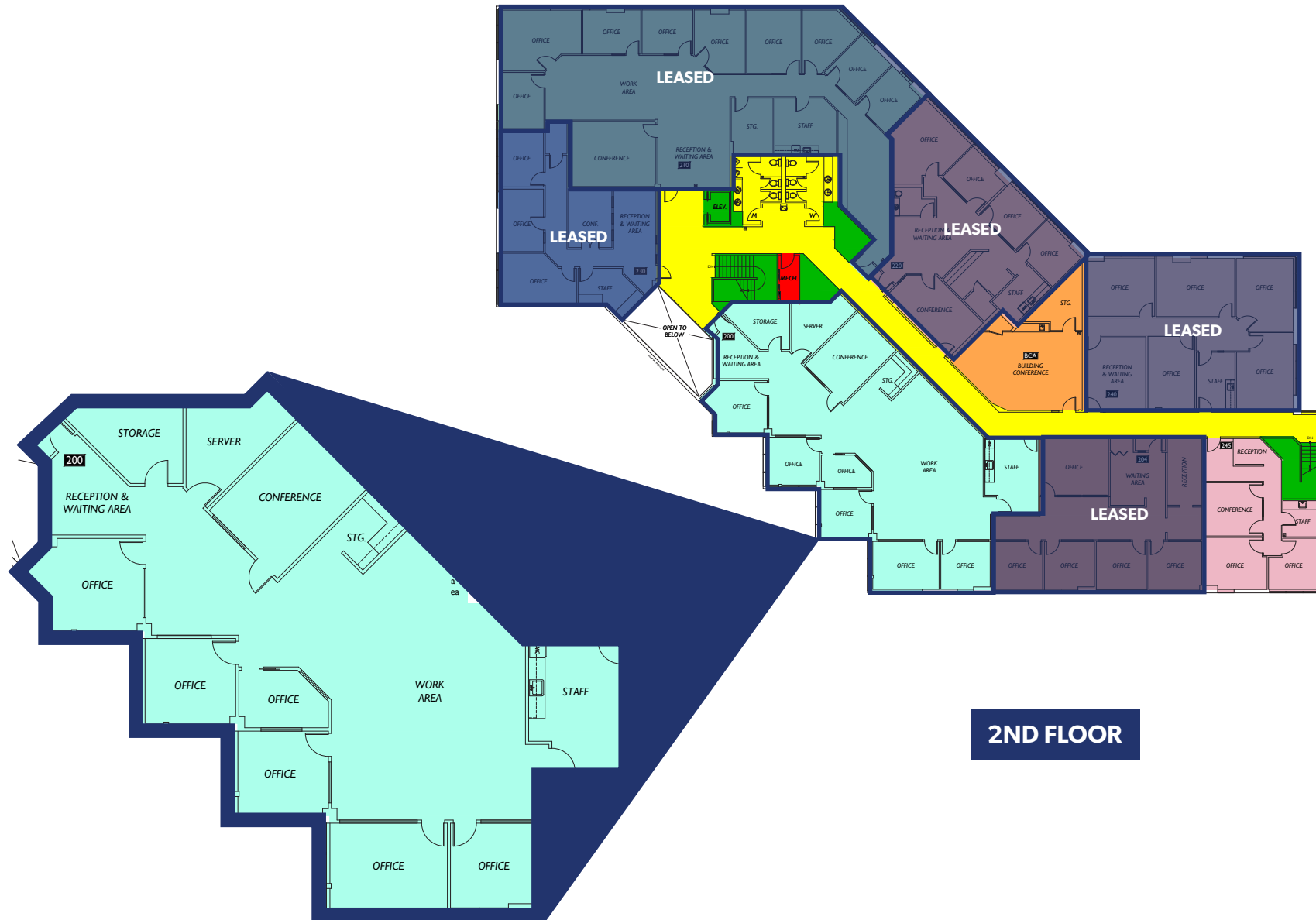


# RUSSELL PLAZA

33600 6th Ave South  
Federal Way, WA

SUITE 200 | 3,697 SF TOTAL

AVAILABLE JANUARY 1ST, 2025

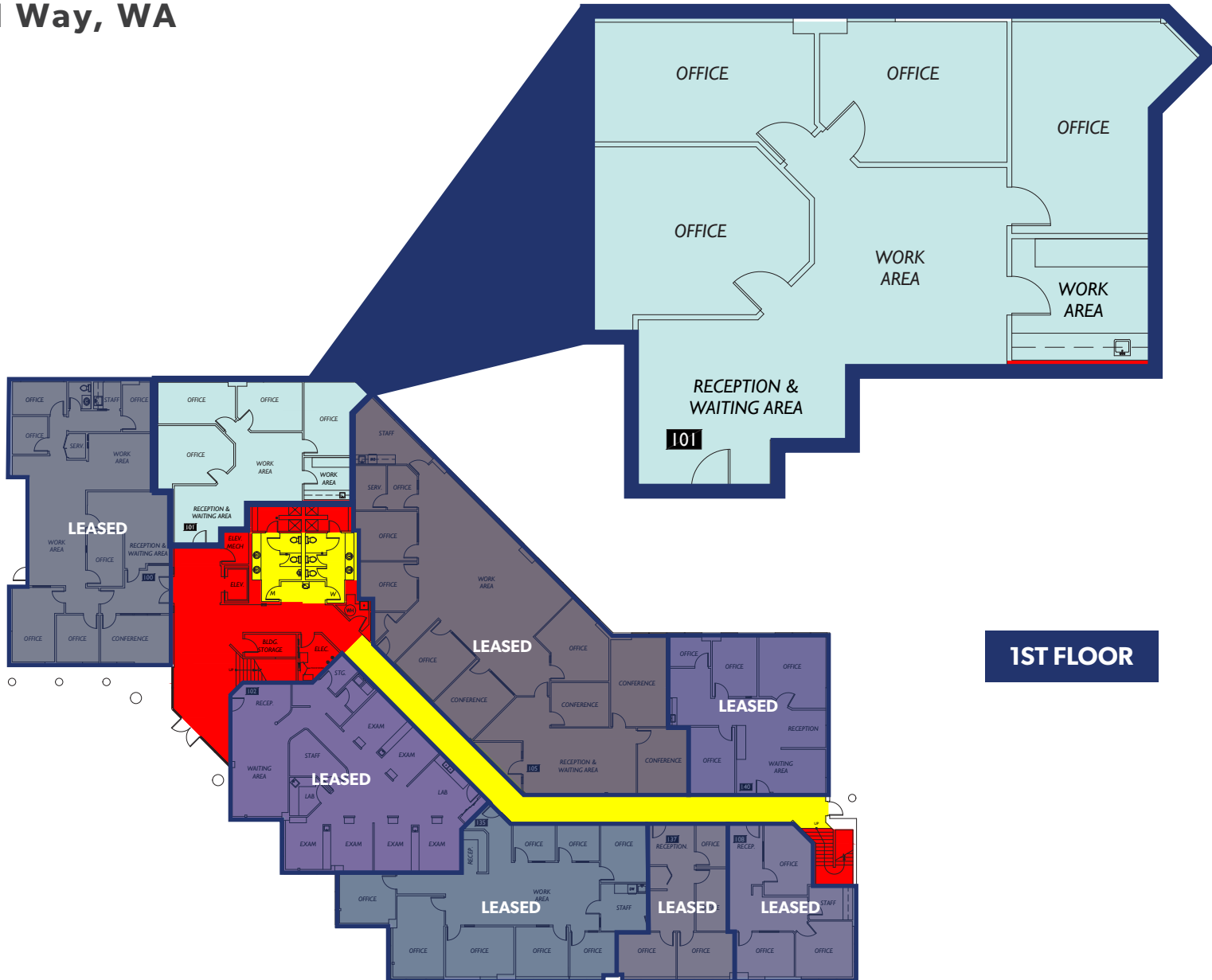


# RUSSELL PLAZA

SUITE 101 | 1,572 SF TOTAL

AVAILABLE NOW

33600 6th Ave South  
Federal Way, WA



**1ST FLOOR**

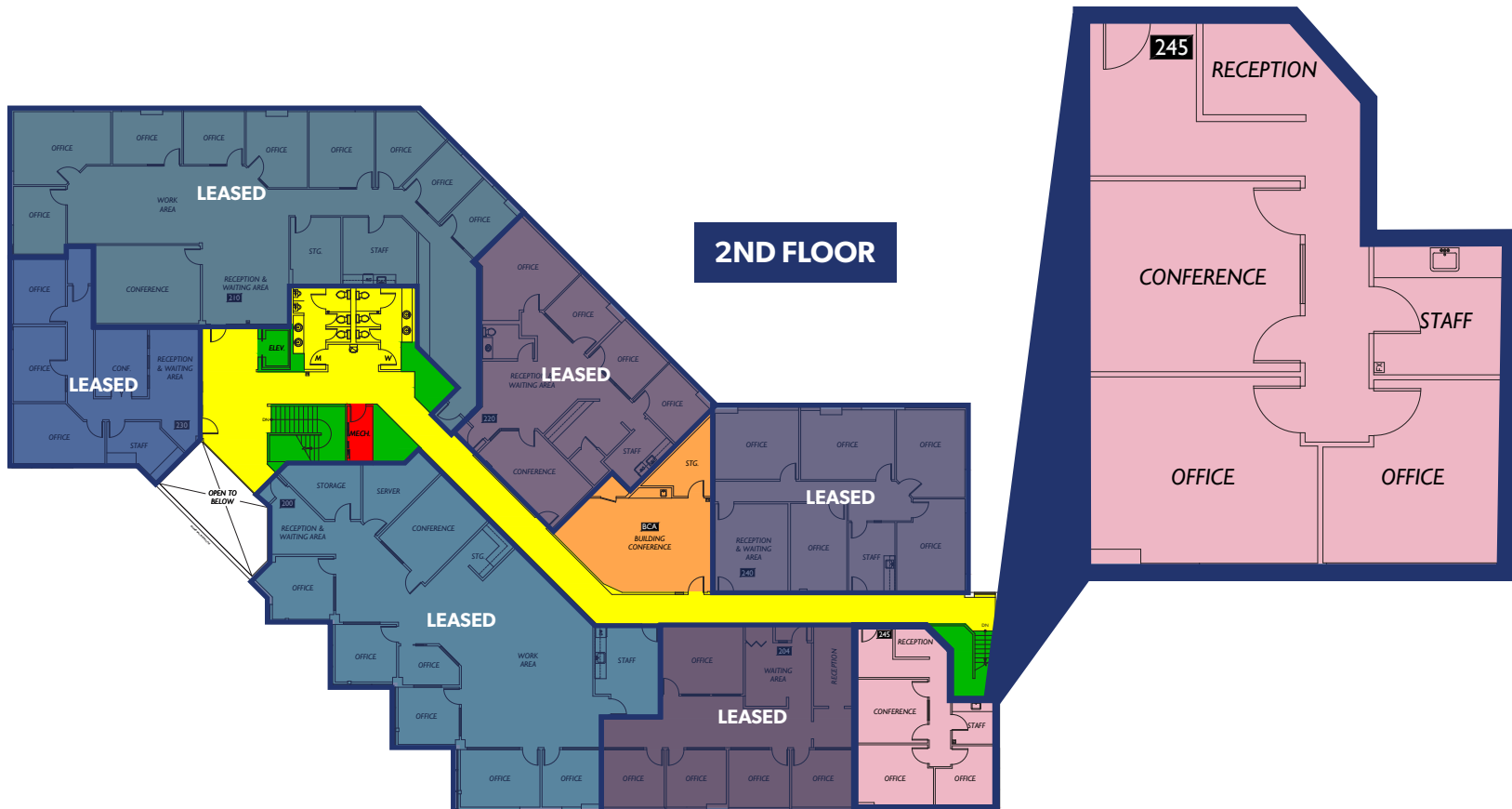


# RUSSELL PLAZA

33600 6th Ave South  
Federal Way, WA

SUITE 245 | 987 SF TOTAL

AVAILABLE NOW



# PHOTOS



*The information contained herein has been obtained from reliable sources, but is not guaranteed. A prospective buyer/tenant should verify each item relating to this property and all information contained herein.*

**SHANE MAHVI**  
 (206) 336-5338  
 smahvi@andoverco.com

**BRIAN BRUININKS, CCIM**  
 (206) 336-5324  
 bbruininks@andoverco.com

